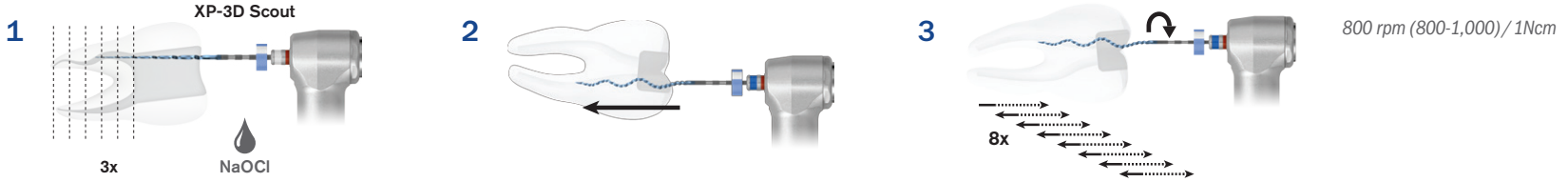


XP-3DTM SHAPER+



- ▶ Prior to using the XP-3D Shaper+, establish working length (WL) to a #15/.02. For advanced/calcified canals, use the mechanized XP-3D Scout instrument (Figure 1) to create a glidepath of #15/.04 (recommended)
 - XP-3D Scout Instruments are used with gentle strokes, advancing the instrument 2-3 until WL is reached.
- ▶ Insert the tip of the XP-3D Shaper+ into the canal until resistance (Figure 2), retract and engage the handpiece in rotation mode. The canal should always contain irrigant.
- ▶ Use long, gentle strokes to progress down to WL (Figure 3). If WL is not reached in 8 strokes, stop, irrigate, and recapitulate. Never force the instrument and always keep it spinning and moving while in the canal.
- ▶ Final Preparation Size: Once WL is reached, remove the instrument to avoid supplementary enlargement of the canal.
 - Tight Canals (apex is naturally smaller than #30): The minimal preparation is a #30/.02 (~5 strokes). The taper can be increased to .04 (~10 strokes). The tip will not expand beyond #30 unless the apex is naturally larger than #30.
 - Larger Canals (apex is naturally larger than #30): The XP-3D Shaper+'s tip can reach up to size #90 if space permits. When using the instrument for an additional ~10 strokes (after initial WL is reached) the taper is typically .04.
- ▶ Prior to obturation, it is recommended to confirm the final apical diameter with an apical verifier, gutta percha point, paper point, or conventional file.
 - Recommended: XP-3D Apical Verifier, now available in sizes #25-50/.04 and in assortment packs.
- ▶ Obturate with bioceramic bonded obturation (BC Sealer/FillerTM with BC PointsTM or normal gutta percha).

Patent Pending

Order online at BrasselerUSA.com or call **800.841.4522**.
In Canada call **800.363.3838**.



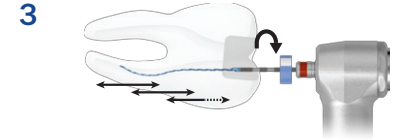
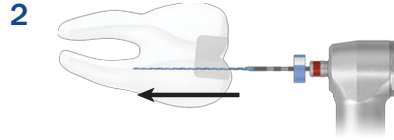
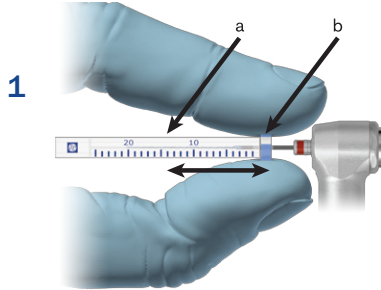
BRASSELER
USA[®] BY YOUR SIDE

XP-3D FINISHER™



STERILE R

800 rpm (800-1,000) / 1Ncm



- ▶ Prior to using the XP-3D Finisher, establish a canal preparation to at least its equal tip size (#25 or #30).
- ▶ Define the working length on the instrument by using the plastic tube (a) to adjust the rubber stop (b) (Figure 1).
- ▶ In multi-rooted teeth, start with the largest canal.
- ▶ Insert the tip of the instrument into the canal prior to engaging the handpiece and prior to placing the irrigant.
Note: To facilitate placement into the canal you can straighten the instrument by cooling it with cooling spray (while in the tube) or alcohol gauze (outside of the tube) (Figure 2).
- ▶ Engage the handpiece in rotation mode and use the XP-3D Finisher for approximately one minute, using slow and gentle 7-8mm lengthwise movements to contact the full length of the canal (Figure 3).

Patent Pending

Order online at [BrasselerUSA.com](https://www.BrasselerUSA.com) or call **800.841.4522**.
In Canada call **800.363.3838**.



BRASSELER
USA® BY YOUR SIDE