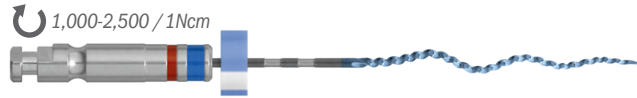


# XP-3D™ RETREATMENT CHAIRSIDE TECHNIQUE CARD



Images of XP-3D Shaper with gutta percha entangled in the virtual core.



Images of XP-3D Finisher removing gutta percha tags.

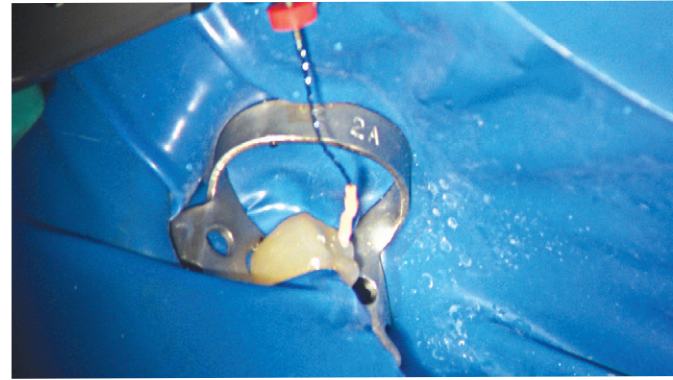


Image courtesy of Dr. Ali Nasseh



Images courtesy of Dr. Klaus Lauterbach- Germany

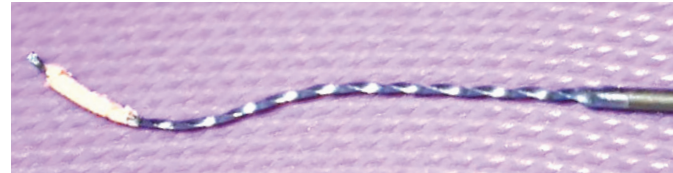


Image courtesy: Dr. Rina Campbell Beckles, Union City, CA



STERILE R

Order online at [BrasselerUSA.com](http://BrasselerUSA.com) or call **800.841.4522**.  
In Canada call **800.363.3838**.

©2018 Brasseler USA. All rights reserved. Printed in the U.S.A.





**BRASSELER**  
USA® BY YOUR SIDE

B-5131-09.18


②




**5.**  Tease out bulk of gutta percha

**2.**  **Place Solvent**


**3.** Gently engage XP-3D Shaper  
⌚ 1,000-2,500

4.  Gentle strokes

**5.**  Tease out bulk of gutta percha

**6.** Engage XP-3D Finisher  
800-1,000

**7.** Copious irrigation & Suction

8.  Obturator

After disinfection is complete, obturate with BC Sealer and BC Points.



**BRASSELER**  
USA® BY YOUR SIDE